

# **Study of COVID-19 deaths claimed by NPHET/data.gov.ie between March 2020 and March 2021 using GRO/CSO death data combined with RIP.ie death notices**

**By: Kieran Morrissey, Mechanical Engineer**

**Date: 15<sup>th</sup> April, 2020**

**Addendum added: 21<sup>st</sup> April, 2020**

## **Objectives**

The goal of this study is not to impress academics with complex statistics or seek favourable peer reviews, but to demonstrate to the ordinary decent citizen of Ireland, in the simplest possible terms, how the 2020 COVID-19 deaths claimed by NPHET every night on RTE1 and published on the data.gov.ie website cannot possibly be true. To that end I will present basic arithmetic and graphs as it is my belief that every Irish citizen should be fully informed of the fraud which has been carried out by the Irish Government, its agents and the media for the benefit of vested interests to terrorise the population into submitting to their draconian COVID measures by grossly overstating the deaths due to COVID-19 in 2020.

This study will conclude that Ireland had the lowest death rate in 2020 since 2012

## **Introduction**

It is a legal requirement in Ireland that every death that takes place in the State must be recorded and registered. Records of deaths in Ireland are held in the [General Register Office \(GRO\)](#), which is the central civil repository for records relating to Births, Marriages and Deaths in Ireland. Deaths must be registered as soon as possible after the death and no later than 3 months. The GRO estimate that approximately 80% of deaths are registered in this timeframe, however many deaths take longer than 3 months especially if a death is referred to the Coroner's Service, such deaths include suicides, violent deaths and more recently all COVID-19 deaths, these deaths may not be registered for months or years after the occurrence. The GRO provide regular updates on the total deaths registered by the month they occurred in, but because of the lag in registrations they do not come close to being accurate until approximately six months after the month of occurrence. Generally, this lag would not cause a major problem as the death data is mainly used for medical research, however in natural disasters and health emergency situations such as the ongoing alleged COVID-19 pandemic, accurate and up-to-date

death data is critical for planning and implementing measured responses to emerging situations. Without this current data on deaths, vested interests can use misinformation to understate or exaggerate deaths to pacify or terrorise the general population into certain actions or inactions, i.e., mass manipulation or hysteria.

## **Methodology**

During the early stages of the alleged COVID-19 pandemic in 2020 a number of publicly funded Irish academics began fearmongering through the media, including state sponsored media, that they estimated thousands of additional deaths would occur due to COVID-19. These deaths are called “excess” as they are above the normally expected deaths based on the previous 5-year average. These academics were estimating deaths compared to deaths notices published on the [RIP.ie website](#). Antidotally the evidence I was receiving from family, friends, work colleagues and my own observations in the major Dublin hospital where I work made me sceptical that the large numbers of COVID-19 deaths being reported were not actually excess deaths and were not above normal for previous flu seasons. In fact, January 2020 had a very low occurrence of flu cases. I began to look at the RIP.ie death notices and could not see how the academics could predict such high numbers of deaths. I contacted the academics and debated with them by email but they claimed the RIP.ie database they were using was privileged and would not share it with me, I was led to believe that they had obtained a proprietary database of the death notices from RIP.ie.

Later in November 2020 I became aware of an experiment being carried out by John Flanagan of the Central Statistics Office (CSO) also using RIP.ie death notices to estimate the total number of deaths occurring in recent months. The last [CSO press statement on 2<sup>nd</sup> November 2020](#) regarding John’s experiment which ended in the September encouraged me to look closer at the possibility of obtaining more up-to-date figures on deaths using the RIP.ie death notices. I developed an automated system to obtain the data required from the death notices published on the RIP.ie website, plus, a method to remove or “clean” notices for deaths which occurred outside of Ireland and duplicate notices. I benchmarked my estimates against previous monthly GRO/CSO death data back to 2014 and found that it was as accurate as John Flanagan found during his experiment.

## Results

The comparison in tabular format between the death notes that I obtained from the RIP.ie website and cleaned to remove deaths which had occurred outside Ireland and duplicate notices, and the published GRO/CSO data from 2014 to 2021 is shown in Table 1 & 2 below.

Table 1

	Deaths estimated on RIP.ie death notices							
	2021	2020	2019	2018	2017	2016	2015	2014
JAN	3,722	2,885	3,093	3,619	3,494	3,083	2,833	2,748
FEB	2,968	2,549	2,674	2,802	2,586	2,724	2,722	2,612
MAR	2,277	2,754	2,699	3,058	2,647	2,869	2,857	2,614
APR	0	3,469	2,645	2,677	2,441	2,564	2,401	2,375
MAY	0	2,618	2,745	2,497	2,495	2,517	2,452	2,273
JUN	0	2,192	2,466	2,374	2,310	2,310	2,217	2,147
JUL	0	2,230	2,493	2,477	2,283	2,356	2,184	2,285
AUG	0	2,328	2,381	2,377	2,375	2,320	2,264	2,238
SEP	0	2,369	2,467	2,343	2,380	2,358	2,317	2,167
OCT	0	2,694	2,797	2,619	2,681	2,463	2,527	2,410
NOV	0	2,493	2,792	2,711	2,567	2,618	2,322	2,336
DEC	0	2,695	3,145	2,714	2,933	3,084	2,677	2,640
<b>Yr. Total</b>	<b>8,967</b>	<b>31,276</b>	<b>32,397</b>	<b>32,268</b>	<b>31,192</b>	<b>31,266</b>	<b>29,773</b>	<b>28,845</b>
								<b>RIP.ie 2014-2019 = 185,741</b>

Table 2

	GRO death registrations from 13th April 2021 email update							CSO
	2,021	2,020	2,019	2,018	2,017	2,016	2,015	2,014
JAN	3,228	2,957	3,049	3,503	3,442	3,131	2,989	2,828
FEB	2,070	2,691	2,607	2,870	2,537	2,710	2,778	2,696
MAR	604	2,891	2,675	3,015	2,642	2,886	2,914	2,656
APR	0	3,552	2,507	2,617	2,452	2,566	2,510	2,446
MAY	0	2,598	2,655	2,424	2,423	2,520	2,566	2,310
JUN	0	2,133	2,389	2,328	2,297	2,307	2,290	2,206
JUL	0	2,121	2,325	2,396	2,295	2,369	2,225	2,323
AUG	0	2,233	2,319	2,299	2,380	2,269	2,355	2,280
SEP	0	2,281	2,414	2,362	2,395	2,412	2,413	2,147
OCT	0	2,534	2,588	2,543	2,635	2,476	2,616	2,385
NOV	0	2,300	2,687	2,607	2,554	2,595	2,401	2,376
DEC	0	2,373	3,067	2,731	3,063	3,110	2,748	2,599
<b>Yr. Total</b>	<b>5,902</b>	<b>30,664</b>	<b>31,282</b>	<b>31,695</b>	<b>31,115</b>	<b>31,351</b>	<b>30,805</b>	<b>29,252</b>
								<b>GRO/CSO 2014-2019 = 185,500</b>

While it can be seen that there are variations between the monthly and yearly data, the totals for the years 2014 to 2019 is 185,741 for RIP.ie and 185,500 for GRO/CSO, a difference of only 0.13%.

I then calculated the previous 5-year average for each month 2018-2012 from the data in Table 1 & Table 2, the excess deaths were calculated as the difference between the previous 5-year average for each month and the total for that month as shown in Table 3 below. The [COVID-19 deaths claimed by NPHET and sourced from data.gov.ie](#) is also included in Table 2 for each month from March 2020 to March 2020, there are no COVID-19 deaths provided for Jan and Feb 2020 and are assumed to be zero.

Table 3

	CSO/ GRO			RIP.ie			data.gov.ie
	GRO/CSO Tot. deaths	GRO/CSO Prev. 5yr AVE	GRO/CSO EXCESS deaths	Rip.ie Tot. deaths	RIP.ie Prev. 5yr AVE	RIP.ie EXCESS deaths	NPHET claimed COVID-19
Jan-19	3,049	3,179	-130	3,093	3,155	-62	
Feb-19	2,607	2,747	-140	2,674	2,689	-15	
Mar-19	2,675	2,823	-148	2,699	2,809	-110	
Apr-19	2,507	2,480	27	2,645	2,492	153	
May-19	2,655	2,449	206	2,745	2,447	298	
Jun-19	2,389	2,299	90	2,466	2,272	194	
Jul-19	2,325	2,322	3	2,493	2,317	176	
Aug-19	2,319	2,329	-10	2,381	2,315	66	
Sep-19	2,414	2,346	68	2,467	2,313	154	
Oct-19	2,588	2,544	44	2,797	2,540	257	
Nov-19	2,687	2,507	180	2,792	2,511	281	
Dec-19	3,067	2,914	153	3,145	2,810	335	
Jan-20	2,957	3,223	-266	2,885	3,224	-339	
Feb-20	2,691	2,714	-23	2,549	2,702	-153	
Mar-20	2,891	2,826	65	2,754	2,826	-72	71
Apr-20	3,552	2,560	992	3,469	2,546	923	981
May-20	2,598	2,518	80	2,618	2,541	77	463
Jun-20	2,133	2,309	-176	2,192	2,335	-143	106
Jul-20	2,121	2,322	-201	2,230	2,359	-129	41
Aug-20	2,233	2,343	-110	2,328	2,343	-15	18
Sep-20	2,281	2,399	-118	2,369	2,373	-4	31
Oct-20	2,534	2,591	-57	2,694	2,617	77	119
Nov-20	2,300	2,569	-269	2,493	2,602	-109	146
Dec-20	2,373	2,922	-549	2,695	2,911	-216	191
Jan-21	3,228	3,216	12	3,722	3,235	487	1,082
Feb-21	2,070	2,723	-653	2,968	2,667	301	1,045
Mar-21	604	2,822	-2,218	2,277	2,805	-528	376
<b>Total Excess</b>						<b>-103</b>	<b>2,167</b>

## Discussion

As can be seen from the Table 3, the excess deaths based on RIP.ie data for a full year from Jan to Dec 2020 (in red) total up to -103 whereas the total deaths claimed by NPHET / data.gov.ie from Mar to Dec 2020 (in blue) total up to 2,167, an alarming difference of 2,270 deaths. It must be noted that NPHET / data.gov.ie do not provide data on COVID-19 deaths in Jan and Feb 2020 and therefore assumed to be zero. If COVID-19 deaths claimed by NPHET/data.gov.ie were caused by a novel virus, and there were no other factors causing excess deaths (such as another novel disease, war, famine, natural disaster, etc.), then the NPHET/data.gov.ie claimed COVID-19 deaths (solid red line) should closely match the RIP.ie excess deaths (dashed green line) in Graph 1.

In order to analyse the results further I prepared Graph 1 from the 5-year average and excess deaths calculated in Table 3.

The expected influenza season can be easily identified from the 5-year average shown in the data in Table 3 and the peak in Graph 1 in Jan 2020 -

- 3,223 deaths GRO/CSO (solid blue line)
- 3,224 deaths RIP.ie (dashed purple line)

The drop in excess deaths for Jan 2020 in the data in Table 3 and the dip in Graph 1 -

- 266 deaths GRO/CSO (solid black line) and
- 339 deaths RIP.ie (dashed green line)

indicate that the deaths which would historically occur in Jan, often referred to “flu season”, will occur later in the as they have occurred occasionally in previous years. These deaths which always occur at some time during the year are delayed due to some undetermined factors in 2020.

As can be seen by the total deaths in the data in Table 3 and the spike in Graph 1 -

- 3,216 deaths GRO/CSO (solid orange line)
- 3,235 deaths RIP.ie (dashed yellow line)

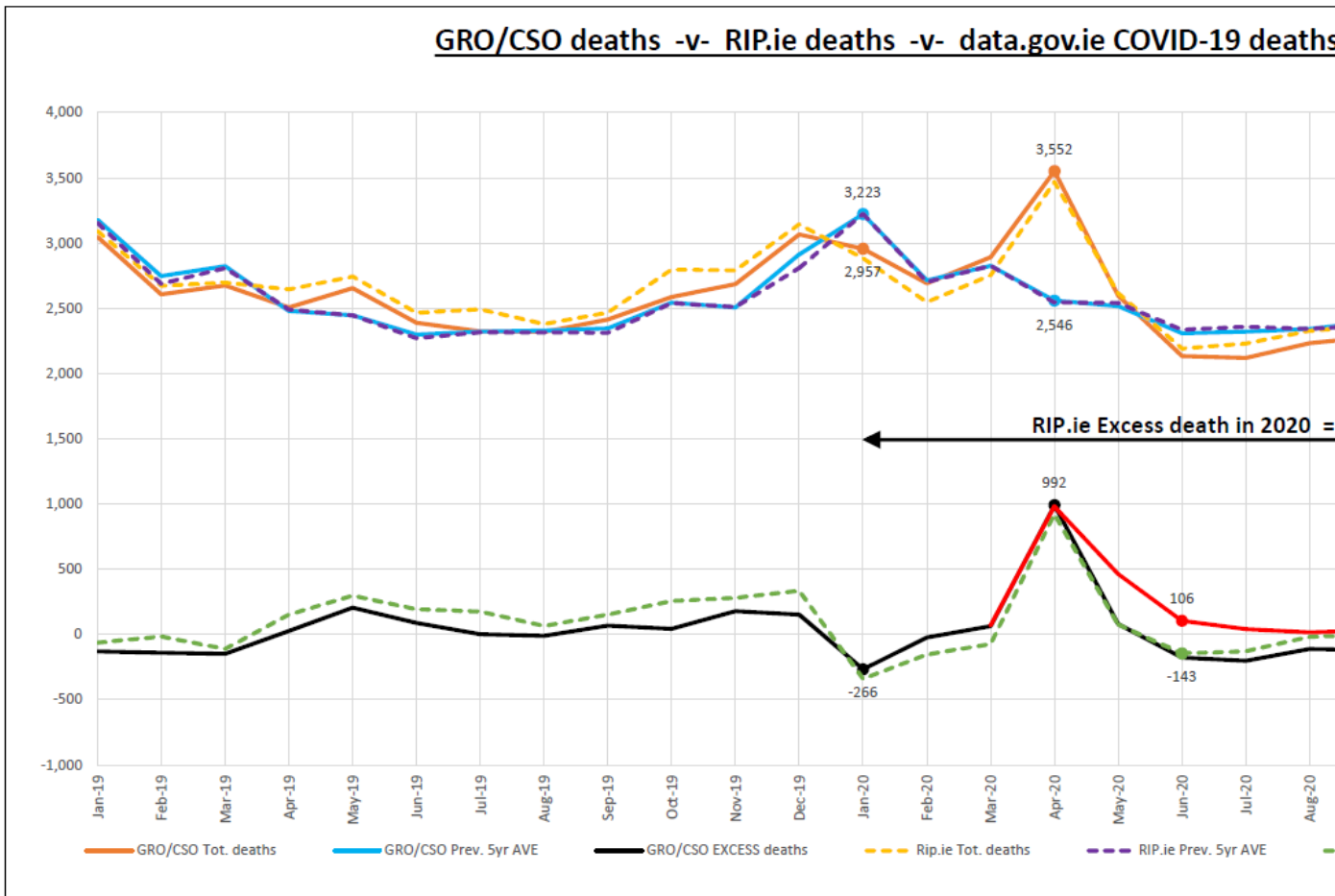
The “flu season” moved from Jan to Apr in 2020.

The number of excess deaths in April 2020 is highlighted in yellow in the data in Table 3 and as shown as the spike in Graph 3 indicates where the influenza or COVID-19 season moved -

- 992 deaths GRO/CSO (solid black line)
- 923 deaths RIP.ie (dashed green line)
- 981 deaths NPHET/data.gov.ie claimed COVID-19 deaths (solid red line).

Oddly, this is the only point at which the claimed COVID-19 deaths match the GRO/CSO and RIP.ie excess deaths.

Graph 1



The next expected influenza season is again indicated in the 5-year average data in Table 3 and the peak in Graph 1 Jan 2021 -

- 3,216 deaths GRO/CSO (solid blue line)
- 3,224 deaths RIP.ie (dashed purple line)

However, the total deaths in the data in Table 3 and the spike in Graph 1 in Jan 2021 is -

3,722 deaths RIP.ie (dashed yellow line), also higher than the April 2020 spike indicating that a serious unexplained event took place and increased the excess deaths by –

487 deaths RIP.ie (dashed green line) in Jan 2021, which is the same month that the [COVID-19 vaccination was rolled out in the Irish nursing homes](#). Death data from RIP.ie also indicates the deaths which occurred in nursing homes directly after the rollout of vaccinations are approximately 500 higher than normal for this time.

The number of claimed COVID-19 deaths shown in the data in Table 3 and as the two high points in Graph 3 in Jan and Feb 2021 indicates a very large exaggeration of COVID deaths -

- 1,082 and 1,045 deaths NPHET/data.gov.ie (solid red line)

In comparison to the to -

- 487 and 301 RIP.ie excess deaths (dashed green line) in Jan and Feb 2021

I obtained 50 records for deaths which occurred in the nursing homes after the scheduled date of COVID-19 vaccinations and when I examined them, I found that the majority of the deaths were recorded as COVID-19 even though they occurred very shortly after the scheduled vaccination dates. If those patients who died were ill with COVID-19 then they should not have been vaccinated, in other words, if they did not have a positive COVID-19 PCR test then it is very likely that they died from an adverse reaction to the experimental COVID-19 vaccination and not COVID-19 disease.

The total GRO/CSO deaths (solid orange line) and excess deaths (solid black line) are ignored from Oct to Mar because they are falling away indicating the lag / delay in the registration of deaths is greatest closer to the present time causing a deficit in the GRO/CSO death data.

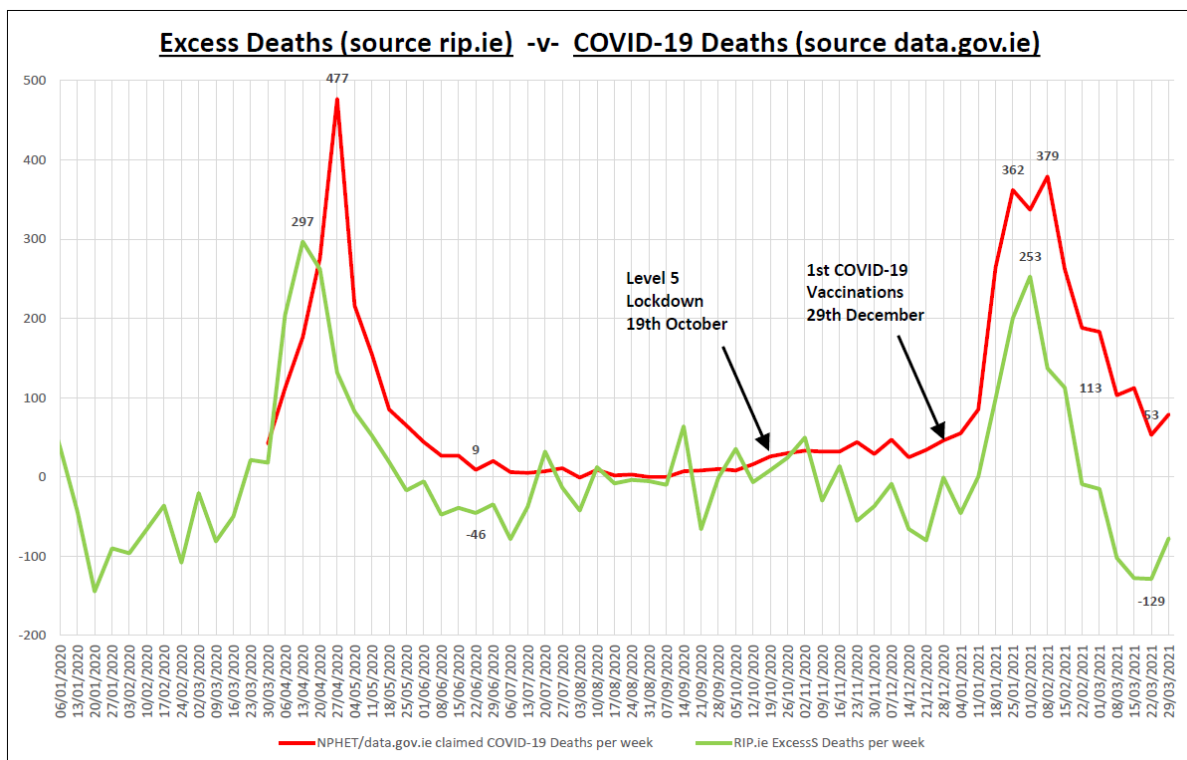
The claimed COVID-19 deaths NPHET/data.gov.ie (solid red line) also look suspiciously higher compared to the excess deaths indicated in Graph 1 by RIP.ie (dashed green line) and GRO/CSO (solid black line) between June and Dec 2020. For this reason, I produced a more detailed Graph 2 for Dec 2020 to Mar 2021 using the same RIP.ie data, but plotted the figures weekly to analysis this more closely.

If the large number of COVID-19 deaths claimed by NPHET/data.gov.ie were caused by a novel virus, and there were no other factors causing excess deaths (such as another novel disease, war, famine, natural disaster, etc.), then the COVID-19 deaths claimed by NPHET/data.gov.ie deaths (solid red line) should closely match the RIP.ie excess deaths (solid green line) in Graph 2, however as can be seen the COVID-19 deaths are consistently higher than the RIP.ie excess deaths. It can also be seen at this level of detail that the peak of the claimed COVID-19 deaths

in mid Apr 2020 were approximately 200 deaths higher and 2 weeks later than the actual peak excess deaths indicated by the RIP.ie death notices.

The NPHE/ data.gov.ie claimed COVID-19 deaths (solid red line) in Graph 2 is also a very smooth line compared to the fluctuating RIP.ie excess deaths (dashed green line) which would be expected for weekly data, this makes the red line appear to be unnatural and false or fabricated.

Graph 2



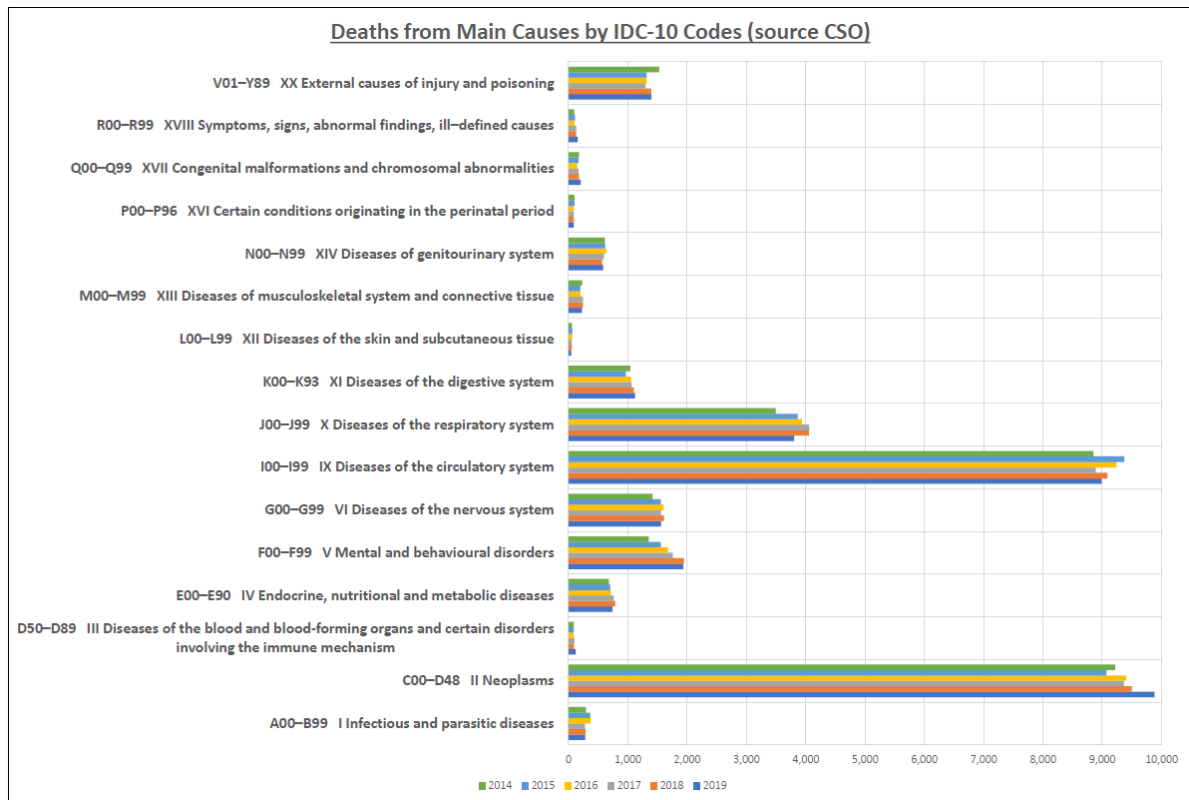
An argument which has been raised by various vested interests is the possibility that healthcare deprivation during the alleged pandemic may have increased other causes of deaths in 2020. While there is a possibility of this occurring later in 2020, I feel that it would be very doubtful that it had any effect in the early part of 2020, and if that were the case, then it would further prove that the COVID-19 death figures were exaggerated as they would have been concealing healthcare deprivation deaths in order for the excess deaths to remain low.

Other vested interests claim that the lockdowns have reduced influenza deaths and accidental deaths which compensate for the extra COVID-19 deaths and that this explains why the total or excess deaths are not higher in 2020. I find this a difficult proposition to accept as the [CSO 2019 Vital Statistics Yearly Summary](#) states that accidents accounted for only 909 deaths and even if there were no accidental deaths in 2020, it would not make up the 2,270 difference between claimed COVID-19 deaths and excess deaths. Influenza deaths were not identified in previous CSO reports, as tests such as PCR, were not used to confirm diagnosis of influenza and those



deaths were recorded as respiratory deaths. Suicides accounted for 421 deaths in 2019 and it is expected that there may be a substantial increase in those deaths due to the socioeconomic impact of the lockdowns plus healthcare deprivation will also most likely increase deaths in related causes. To give an overview of the relative numbers of deaths in the main IDC-10 causes, and to demonstrate how little they vary from year to year, thus having little effect on the 5-year average and on excess deaths, I have compiled Graph 3 below from the [CSO's 2014-2019 Vital Statistics Annual Reports](#).

Graph 3



## Conclusion

By now the, mis-match that I have outlined between the NEPHET/data.gov.ie claimed COVID-19 deaths and the official GRO registered deaths up to Jun 2020 together with the RIP.ie cleaned death notices from then up to Mar 2021 can only bring you to the same conclusion that I have arrived at. That is, that the NEPHET/data.gov.ie claimed COVID-19 deaths are deaths of older people and people with underlying conditions who died as per normal but were fraudulently classified as COVID-19 by vested interests using PCR tests which have found to produce a high percentage of [false positive results](#).

Furthermore, I conclude that the approximately 500 excess deaths in Jan-Feb 2021 must be related to the [rollout of the vaccinations in those nursing homes during that period](#), and that the excessively high COVID-19 deaths claimed by NPHET/data.gov.ie in Jan-Feb 2021 are contrived for the sole purpose of allowing those deaths to be explained as COVID-19 as per the death records rather than adverse reactions to the vaccines.

And finally, the health of a nation can be quickly assessed by looking at its trend death rates as quoted in deaths per 1,000 of population. I have prepared Table 4 below from CSO annual reports, recent GRO updated data and RIP.ie death notices for 2020. The table shows that the 2020 death rate will be the lowest since 2012, a clear indication that there was no need for the mass hysteria created by vested interests which could not be challenged due to the lack of up-to-date and transparent death data from the Central Statistics Office.

Table 4

<u>Year</u>	GRO / CSO								RIP.ie
	2012	2013	2014	2015	2016	2017	2018	2019	2020
Population x 1,000	4594	4615	4645	4688	4740	4793	4857	4922	4980
Deaths	29,186	29,504	29,252	30,805	31,351	31,115	31,695	31,282	31,276
Death Rate	<b>6.35</b>	<b>6.39</b>	<b>6.30</b>	<b>6.57</b>	<b>6.61</b>	<b>6.49</b>	<b>6.53</b>	<b>6.36</b>	<b>6.28</b>

## References

All references are hyperlinked in blue in the report.

# **Addendum 1**

## **by Kieran Morrissey**

### **21<sup>st</sup> April 2021**

This is an addendum to the “Study of COVID-19 deaths claimed by NPHE/PHET/data.gov.ie between March 2020 and March 2021 using GRO/CSO death data combined with RIP.ie death notices” By: Kieran Morrissey Date: 15<sup>th</sup> March 2021.

On page 2 of the above study, I stated: -

*“I began to look at the RIP.ie death notices [During the early stages of the alleged COVID-19 pandemic in 2020] and could not see how the academics could predict such high numbers of deaths. I contacted the academics and debated with them by email but they claimed the RIP.ie database they were using was privileged and would not share it with me, I was led to believe that they had obtained a proprietary database of the death notices from RIP.ie.”*

Two of these academics were Dr Pdraig MacCarron, a mathematician in University Limerick and Dr Gerard McCarthy, an Oceanographer in Maynooth University, who led the research and the communications that I had with them from 10<sup>th</sup> May 2020 onward and I copied Laura Hogan the RTE reporter who published their work.

During my communications with these three individuals last May, I provided numerous data sets including registered deaths that I had obtained directly from the GRO, EUROMOMO data, etc. plus reasonable anecdotal evidence of why their alarming predictions could not be possibly correct. Despite my plea to them to stop traumatising the nation with their reports, they would not share any of their data to allow me to check and they refused to go back and re-check their work, they said they were “too busy”. I emailed both McCarthy and MacCarron on 25<sup>th</sup> March 2021 asking them to peer review and validate my recent research, MacCarron did not reply and McCarthy’s only response was asking me to stop emailing him.

As I stated in my study: -

*“I developed an automated system to obtain the data required from the death notices published on the RIP.ie website, plus, a method to remove or “clean” notices for deaths which occurred outside of Ireland and duplicate notices.”*

I published my study on the 15<sup>th</sup> April 2021.

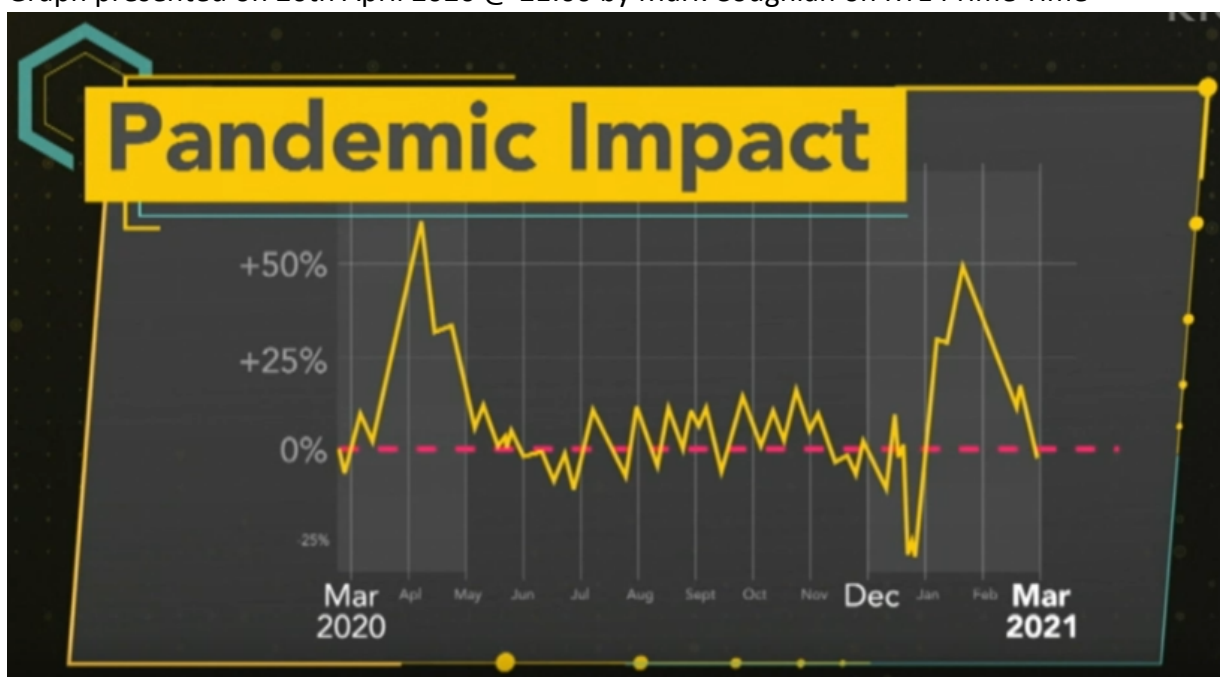
RTÉ is the national media outlet who receive 85% of the TV license fees collected in Ireland to carry out its Public Service Media commitments and they state that their editorial values include a commitment to:

- Operate in the public interest, providing news and current affairs that is fair and impartial, accurate and challenging
- Be honest and transparent in all of our activities
- Take personal responsibility for pursuing the organisation's goals to inform, entertain and challenge; and to connect to the lives of all people living in Ireland. RTÉ seeks to achieve these goals through providing a diverse range of services, channels, programming and content for all of the people of Ireland.

On 20<sup>th</sup> April 2020 @ 21:00 Mark Coughlan RTE Prime Time presented a brief 4:16 minute segment titled "Pandemic Impact - Excess Mortality" which included a video statement by Dr Gerard McCarthy and mentioned Dr Padraig MacCarron. RTE later published an article on their website titled "3,200 excess deaths linked to pandemic - new analysis".

The alarmist RTE segment and article did not explain how McCarthy and MacCarron extracted their data from the RIP.ie website, how they cleaned out duplicates, removed deaths which occurred outside Ireland. Mark Coughlan claimed that the data was 97% accurate without presenting any numbers of deaths, data which he had also presumably not seen. The only information provided by RTE to support their un-scientific claim of 3,200 excess deaths was the graph below which does not indicate the number of deaths estimated by McCarthy and MacCarron. The unsubstantiated graph merely shows an estimated % increase in deaths compared to an un-named red dotted line at 0%. The graph does not state if the dotted red line represents the previous 5-year average which is required to calculate excess mortality or what exactly it represents.

Graph presented on 20th April 2020 @ 21:00 by Mark Coughlan on RTE Prime Time



The above RTE graph does not cover a standard statistical year i.e., 1<sup>st</sup> Jan to 31<sup>st</sup> Dec and, even if it had any data to back it up, it would be skewed by including deaths from two flu seasons i.e., the deaths from the 2020 flu season which shifted from the normal Jan peak to Apr 2020, plus the deaths from the 2021 flu season which was mid Jan to mid Feb and presenting a false comparison, in otherwise it is FAKE NEWS.

The detailed data that I present in Table 3 of my study indicates the exact number of deaths I estimate from RIP.ie each month and also the published GRO data for each month from 1st January 2020 to 31st March 2021 and includes the previous 5-year monthly averages which is the required baseline for calculating excess deaths also shown for each month. For a true and accurate assessment, I have edited the table to compare my RIP.ie estimates and GRO data to the above RTE graph and their claim of 3,200 deaths. Table 5 below shows the data for the period March 2020 to Mar 2021, the two peaks indicating the two flu seasons included in the period are highlighted in yellow.

There is one very strange co-incidence in the calculations, based on the latest available GRO data that I received by email from Roscommon on 13<sup>th</sup> April 2020, the excess deaths from Mar 2020 to Mar 2021 calculate to minus -3,203 which is a 6,403 difference from the plus +3,200 Coughlan, McCarthy and McCarron claim on RTE. We know due to the lag in registrations that the GRO deaths will be higher as time passes but they cannot not rise by 6,402 over the next two months because the GRO estimate that 80% of deaths are registered at any point in time. How did McCarthy and MacCarron arrive at the same 3,200 excess deaths as the current GRO data indicates, but positive instead of negative?

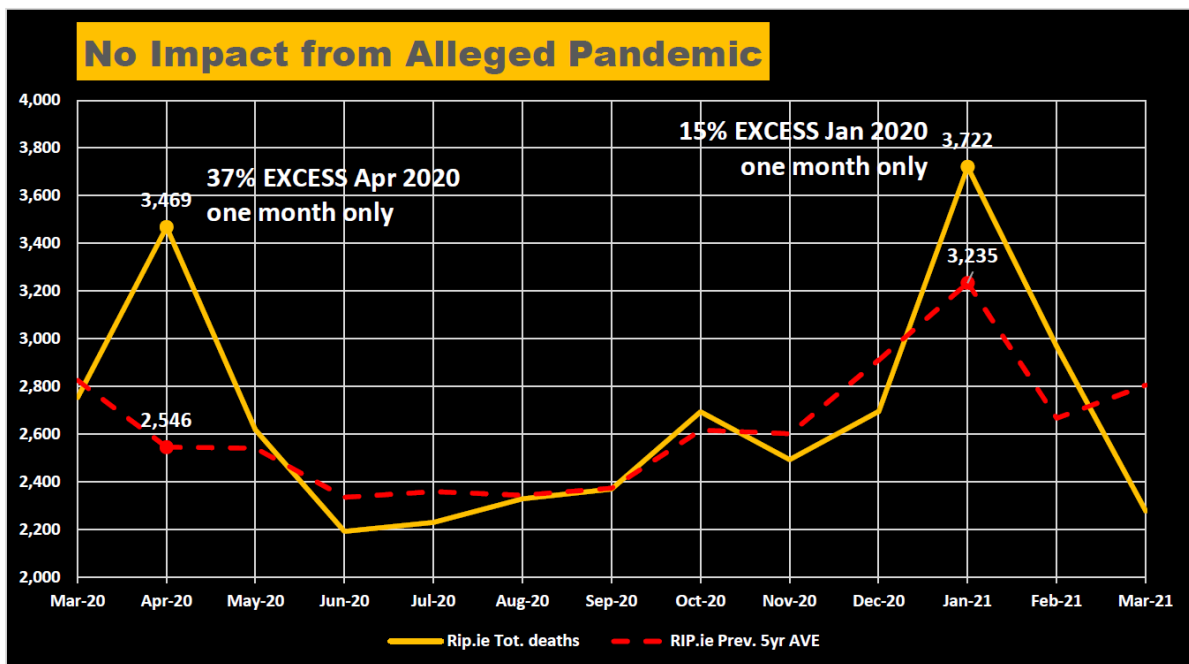
Table 5

	CSO/ GRO			RIP.ie			data.gov.ie
	GRO/CSO Tot. deaths	GRO/CSO Prev. 5yr AVE	GRO/CSO EXCESS deaths	Rip.ie Tot. deaths	RIP.ie Prev. 5yr AVE	RIP.ie EXCESS deaths	NPHET claimed COVID-19
Mar-20	2,891	2,826	65	2,754	2,826	-72	71
Apr-20	3,552	2,560	992	3,469	2,546	923	981
May-20	2,598	2,518	80	2,618	2,541	77	463
Jun-20	2,133	2,309	-176	2,192	2,335	-143	106
Jul-20	2,121	2,322	-201	2,230	2,359	-129	41
Aug-20	2,233	2,343	-110	2,328	2,343	-15	18
Sep-20	2,281	2,399	-118	2,369	2,373	-4	31
Oct-20	2,534	2,591	-57	2,694	2,617	77	119
Nov-20	2,300	2,569	-269	2,493	2,602	-109	146
Dec-20	2,373	2,922	-549	2,695	2,911	-216	191
Jan-21	3,228	3,216	12	3,722	3,235	487	1,082
Feb-21	2,070	2,723	-653	2,968	2,667	301	1,045
Mar-21	604	2,822	-2,218	2,277	2,805	-528	376
		<b>Total Excess</b>	<b>-3,203</b>		<b>Total Excess</b>	<b>649</b>	<b>2,167</b>

The deaths that I estimate from above “cleaned” RIP.ie notices Mar 2020 to March 2021 is 649 deaths, however I must stress that the period is not a statical calendar year and includes two flu seasons which is not comparing like with like.

To be totally fair to Coughlan, McCarthy and McCarron I have produced a graph in the same format as the RTE graph, from March to March but showing the actual number of cleaned RIP.ie death notices instead of a random % as they did. I even used their favourite Bat-Man colours so they will have no difficulty comprehending, it is shown below as Graph 4. Again, this graph includes two flu seasons so it is deliberately skewed by.

Graph 4 (Bat-Man colours)



In conclusions I can only make three findings regarding the presentation by Coughlan, McCarthy and McCarron on RTE Prime Time, 20th April 2020 @ 21:00 as they failed to present any of their data: -

1. The RTE graph is NOT based on the numbers of death notices published on the RIP.ie website for the period claimed. I cannot determine how the RTE graph was concocted or what data, if any was, used to fabricate it.
2. The RTE presentation was unbalanced, without any supporting data and is a gross misrepresentation of excess deaths using a non-standard calendar year (March to March) so as to include two flu seasons, thus exaggerating any impact of the alleged pandemic and spreading fear terror amongst trusting Irish citizens.
3. If there was any truth in what Coughlan, McCarthy and McCarron claimed, RTE would have, and should have, contacted John Flanagan of the CSO, who carried out an extensive research experiments on RIP.ie, notices to validate the graph they presented as it has great impact on the mental health of the nation. John Flanagan Who has a copy of my study has not responded negatively or found any fault with it.